



Dedicated To Improve The Quality of LED Vehicle Lighting



# ABOUT US

Indo Japan Horologicals (P) Ltd., India's FIRST Company making SMD LED, High Power LED and COB LED, an ISO 9001 and ISO 14001 Company is headquartered at Kolkata in India

Indo Japan has a well established state-of-the-art manufacturing facility with automated Production machinery from industry leaders in Japan, Switzerland, USA, Germany etc, spread over automated facility in Kolkata. The operations are efficiently managed by Engineering and Technical experts, with deep commitment to quality policies of Indo Japan.

Established in the year 1994, the company was set up for making Quartz Movements for wrist Watches with assistance of Citizen Watch Company Limited of Japan. Indo Japan has its own Manufacturing Facility measuring about 40,000 square feet in a prime location in West Bengal Electronics Complex, Sector – V, Salt Lake, Kolkata.



Item No.:IJHLMB01  
Power:35W(with fan)  
Voltage:DC 9-18V  
Low Beam:1750LM  
High Beam:3500LM  
Material:Aluminum  
Lifespan:30000HRS  
Certification:CE E9 ROHS



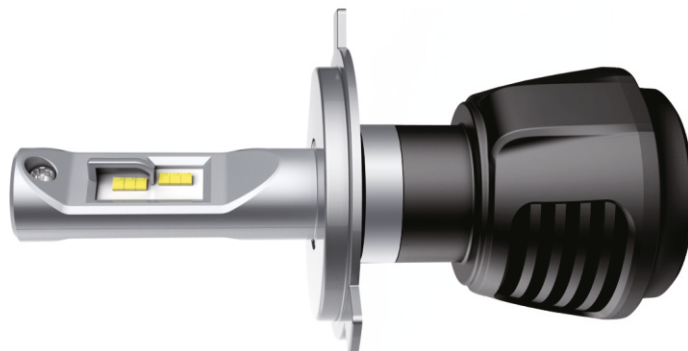
Item No.:IJHLMC01  
Power:20W  
Voltage:AC/DC 12-24V  
Low Beam:2000LM  
High Beam:2400LM  
Material:Aluminum  
Lifespan:30000HRS  
Certification:CE E9 ROHS



Item No.:IJHLMC02  
Power:30W(with fan)  
Voltage:AC/DC 12-24V  
Low Beam:2000LM  
High Beam:3000LM  
Material:Aluminum  
Lifespan:30000HRS  
Certification:CE E9 ROHS



Item No.:IJHLMC03  
Power:42W  
Voltage:AC/DC 12-24V  
Low Beam:2500LM  
High Beam:4200LM  
Material:Aluminum  
Lifespan:30000HRS  
Certification:CE E9 ROHS





# INDO JAPAN

INDIA'S FIRST LED CHIP MANUFACTURER

## COB



Product Code	Dimensions	Light Source Area	Typ. Input Voltage	Max. Current (mA)	Colour Temperature	Typ. Power
IJ-FCOB-13-A	13.5 x 13.5 mm	Ø 10.0	18	350	3000K, 4000K, 5000K, 6000K	<b>6W</b>
IJ-FCOB-13-E	13.5 x 13.5 mm	Ø 10.0	36	350	3000K, 4000K, 5000K, 6000K	<b>12W</b>
IJ-FCOB-13-I	13.5 x 13.5 mm	Ø 10.0	18	900	3000K, 4000K, 5000K, 6000K	<b>15W</b>
IJ-FCOB-19-A	19.0 x 19.0 mm	Ø 14.0	36	350	3000K, 4000K, 5000K, 6000K	<b>12W</b>
IJ-FCOB-19-E	19.0 x 19.0 mm	Ø 14.0	54	350	3000K, 4000K, 5000K, 6000K	<b>18W</b>
IJ-FCOB-19-I	19.0 x 19.0 mm	Ø 14.0	36	900	3000K, 4000K, 5000K, 6000K	<b>27W</b>
IJ-FCOB-19-G	28.0 x 28.0 mm	Ø 22.0	54	750	3000K, 4000K, 5000K, 6000K	<b>40W</b>
IJ-FCOB-28-A	28.0 x 28.0 mm	Ø 22.0	36	700	3000K, 4000K, 5000K, 6000K	<b>25W</b>
IJ-FCOB-28-E	28.0 x 28.0 mm	Ø 22.0	36	1500	3000K, 4000K, 5000K, 6000K	<b>54W</b>
IJ-FCOB-28-I	28.0 x 28.0 mm	Ø 22.0	36	2000	3000K, 4000K, 5000K, 6000K	<b>72W</b>
IJ-FCOB-38-A	38.0 x 38.0 mm	Ø 32.0	54	700	3000K, 4000K, 5000K, 6000K	<b>40W</b>
IJ-FCOB-38-E	38.0 x 38.0 mm	Ø 32.0	54	2000	3000K, 4000K, 5000K, 6000K	<b>100W</b>

### Advantages of Indo Japan's COB

Made with latest "Flip Chip" Technology in our state of the art manufacturing facility

High Lumen Efficiency upto 180 lm/W

CRI upto 95 Ra

Very low heat emission. COBs need very small heat sink surface area, compared to traditional COB.

Long life, upto 50000 Running Hours.

INDO JAPAN HOROLOGICALS (P) LTD.

Factory : Indo Japan House, J-1/12, Block EP, Sector 5, Salt Lake - Electronics Complex, Kolkata 700091

E-mail : [info@indojapan.in](mailto:info@indojapan.in) Website : [www.indojapan.in](http://www.indojapan.in) Contact : 033 – 4068 7043





# INDO JAPAN

INDIA'S FIRST LED CHIPMANUFACTURER

## SMD LED



## SMD LED 2835

Model	Input Voltage (V)	Forward Current (mA)	Flux	Power	CCT
IJ1229L3VSMD2835	2.8 – 3.1	65	24 – 36 lm	0.2W	2500K – 10000K
IJ1835L3VSMD2835	3.1 – 3.4	150	60 – 75 lm	0.5W	2500K – 10000K
IJ2445H6VSMD2835	5.8 – 6.5	150	120 – 150 lm	1W	2500K – 10000K
IJ1750H9VSMD2835	8.4 – 9.4	100	115 – 145 lm	1W	2500K – 10000K
IJ1543H18VSMD2835	18 – 18.6V	30	60 – 70 lm	0.5W	2500K – 10000K
IJ1543H18VSMD2835	18 – 18.6V	60	120 – 130 lm	1W	2500K – 10000K
IJ7575R625NMSMD2835	2 – 2.4V	60	600 – 800 mcd	0.2W	Red – 625nm
IJ7575(4)R625NMSMD2835	2 – 2.4V	150	1400 – 1800 mcd	0.5W	Red – 625nm
IJ1016G525NMSMD2835	3 – 3.4V	60	900 – 1200 mcd	0.2W	Green – 525nm
IJ1016G525NMSMD2835	3 – 3.4V	150	2500 – 2800 mcd	0.5W	Green – 525nm
IJ1229B450NMSMD2835	3 – 3.4V	60	1000 – 1300 mcd	0.2W	Blue – 450nm
IJ1229B450NMSMD2835	3 – 3.4V	150	2500 – 2800 mcd	0.5W	Blue – 450nm

## SMD LED 3030



Model	Input Voltage (V)	Forward Current (mA)	Flux	Power	CCT
IJ1229(3)L3VSMD2835	3.1 – 3.4	300	120 – 150 lm	0.5W	2500K – 10000K
IJ2445H6VSMD3030	5.8 – 6.5	150	140 – 170 lm	1W	2500K – 10000K
IJ2445H6VSMD3030	6.2 – 6.6	180	160 – 190 lm	1.2W	2500K – 10000K

INDO JAPAN HOROLOGICALS (P) LTD.

Factory : Indo Japan House, J-1/12, Block EP, Sector 5, Salt Lake - Electronics Complex, Kolkata 700091

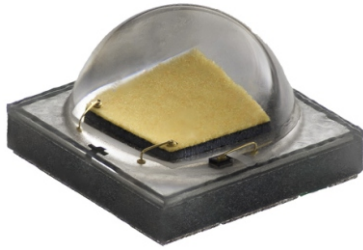
E-mail : [info@indojapan.in](mailto:info@indojapan.in) Website : [www.indojapan.in](http://www.indojapan.in) Contact : 033 – 4068 7043



# INDO JAPAN

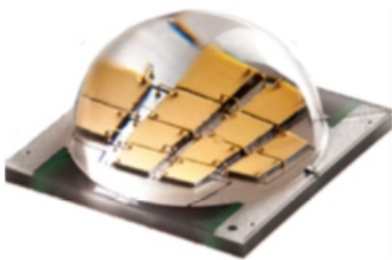
INDIA'S FIRST LED CHIP MANUFACTURER

## HIGH POWER



**HP 3535**

Model	Input Voltage (V)	Forward Current (mA)	Flux	Power	CCT
IJ4747HP3535V3	3.1 – 3.5	1000mA	380 – 395 lm	3W	2500K – 10000K
IJ3535HP3535V6	5.6 – 6.4	600mA	380 – 395 lm	3W	2500K – 10000K
IJ3535HP3535V12	11.8 – 12.6	300mA	380 – 395 lm	3W	2500K – 10000K



**HP 5050**

Model	Input Voltage (V)	Forward Current (mA)	Flux	Power	CCT
IJ3535HP5050V3	3.1 – 3.5	2000mA	600 – 650 lm	6W	2500K – 10000K
IJ3535HP5050V6	6.1 – 6.5	1000mA	600 – 650 lm	6W	2500K – 10000K

INDO JAPAN HOROLOGICALS (P) LTD.

Indo Japan House, J-1/12, Block EP, Sector 5, Salt Lake - Electronics Complex, Kolkata 700091

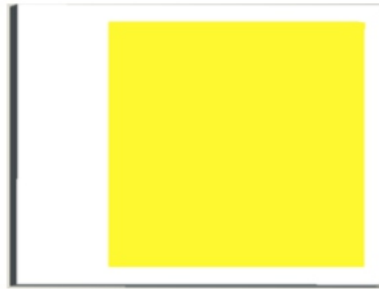
E-mail : [info@indojapan.in](mailto:info@indojapan.in) Website : [www.indojapan.in](http://www.indojapan.in) Contact : 033 – 4068 7043



# INDO JAPAN

INDIA'S FIRST LED CHIP MANUFACTURER

## CSP



### CSP 2016

Model	Input Voltage (V)	Forward Current (mA)	Flux	Power	CCT
N201611V3	3.1 – 3.5	1200mA	400 – 450 lm	4W	2500K – 10000K



### CSP 6018

Model	Input Voltage (V)	Forward Current (mA)	Flux	Power	CCT
P601803V9	9.1 – 9.6	1200mA	1100 – 1150 lm	12W	2500K – 10000K

INDO JAPAN HOROLOGICALS (P) LTD.

Indo Japan House, J-1/12, Block EP, Sector 5, Salt Lake - Electronics Complex, Kolkata 700091

E-mail : [info@indojapan.in](mailto:info@indojapan.in) Website : [www.indojapan.in](http://www.indojapan.in) Contact : 033 – 4068 7043